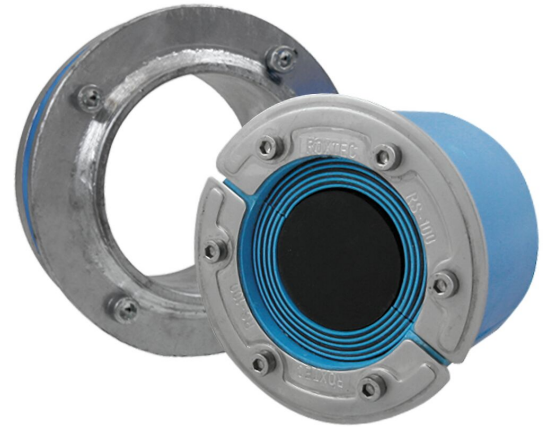




Roxtec Dichtung RS X

Durchführung für Umgebungen, wo Schweißen nicht erlaubt, empfohlen oder erwünscht ist.

Roxtec RS X ist eine schweißfreie Abdichtung mit Hülse für Einzelkabel und -rohre. Die Durchführung ist ideal für die Nachrüstung in Umgebungen, wo Schweißen nicht erlaubt, empfohlen oder erwünscht ist. Die Hülse besitzt außen eine Gummidichtung, die sich beim Anziehen der Schrauben im Loch ausdehnt und so eine feste Verbindung herstellt. Die RS X Dichtung ist dank entferntbarer Schichten an verschiedene Kabel- und Rohrgrößen anpassbar.



- Perfekt für die Nachrüstung

Produkteigenschaften



Feuerhemmend



Wasserdicht



Gasdicht

Aufbau der Installation



Metall

Montagetyp



Bestehende Öffnung

Klassifizierungen und Zertifikate

Feuer

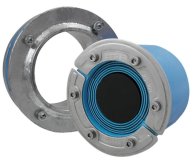
- KLASSE A gemäß IMO 2010 FTP Code

Dichtigkeit

- Gas: 2,67 Bar (Katastrophenfall)
- Wasser: 4 bar (Katastrophenfall)

Daten der Abdichtungskomponenten

Dichtkomponenten



Roxtec-Kit RS X



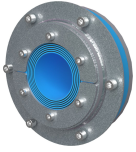
Gleitmittel

Weitere Informationen finden Sie unter www.roxtec.com.

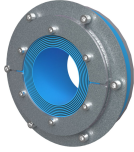


Vorkonfigurierte Durchführungs-Kits

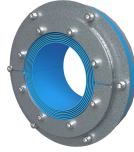
mm/kg



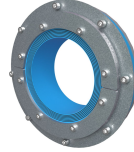
RS X 100 AISI316
WOC/GALV



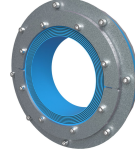
RS X 125 AISI316
WOC/GALV



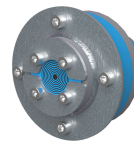
RS X 150 AISI316
WOC/GALV



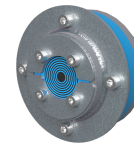
RS X 175 AISI316
WOC/GALV



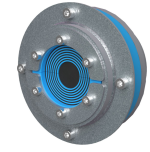
RS X 200 AISI316
WOC/GALV



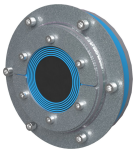
RS X 43 AISI316/GALV



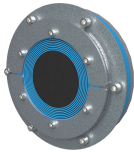
RS X 50 AISI316/GALV



RS X 75 AISI316/GALV



RS X 100 AISI316/GALV



RS X 125 AISI316/GALV

Title	Konfiguration	Öffnungsmaße Ø	Gewicht	Art. Nr.
RS X 100 AISI316 WOC/GALV	1x (48.0-70.0)	145 - 147	3	RSXG001001021
RS X 125 AISI316 WOC/GALV	1x (66.0-98.0)	170 - 172	4	RSXG001251021
RS X 150 AISI316 WOC/GALV	1x (93.0-119.0)	199 - 201	5.2	RSXG001501021
RS X 175 AISI316 WOC/GALV		220 - 222	5	RSXG001751021
RS X 200 AISI316 WOC/GALV		250 - 252	6.6	RSXG002001021
RS X 43 AISI316/GALV	1x (4.0-23.0)	82 - 84	0.8	RSXG100431021
RS X 50 AISI316/GALV	1x (8.0-30.0)	90 - 92	1.4	RSXG100501021
RS X 75 AISI316/GALV	1x (24.0-54.0)	115 - 117	2.2	RSXG100751021
RS X 100 AISI316/GALV	1x (48.0-70.0)	145 - 147	3.2	RSXG101001021
RS X 125 AISI316/GALV	1x (66.0-98.0)	170 - 172	2.8	RSXG101251021

The product information provided by Roxtec does not release the purchaser of the Roxtec system, or part thereof, from the obligation to independently determine the suitability of the products for the intended process, installation and/or use.

Roxtec gives no guarantee for the Roxtec system or any part thereof and assumes no liability for any loss or damage whatsoever, whether direct, indirect, consequential, loss of profit or otherwise, occurred or caused by the Roxtec systems or installations containing components not manufactured by an authorized manufacturer and/or occurred or caused by the use of the Roxtec system in a manner or for an application other than for which the Roxtec system was designed or intended.

Roxtec expressly excludes any implied warranties of merchantability and fitness for a particular purpose and all other express or implied representations and warranties provided by statute or common law. User determines suitability of the Roxtec system for intended use and assumes all risk and liability in connection therewith. In no event shall Roxtec be liable for indirect, consequential, punitive, special, exemplary or incidental damages or losses.

The Roxtec products are offered and sold in accordance with the conditions of the Roxtec General Terms of Sales. The latest version of the Roxtec General Terms of Sales can be downloaded from <https://www.roxtec.com/en/about-us/about-roxtec/general-terms-of-sales/>

We reserve the right to make changes to the product and technical information without further notice. Any errors in print or entry are no claims for indemnity. The content of this publication is the property of Roxtec International AB and is protected by copyright.

This document was generated on: 2024-04-06